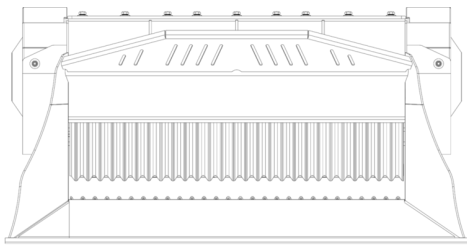
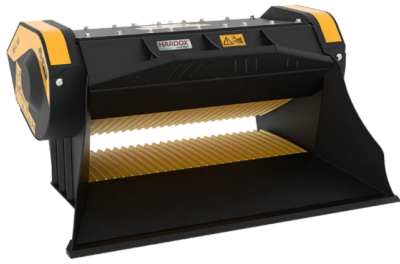
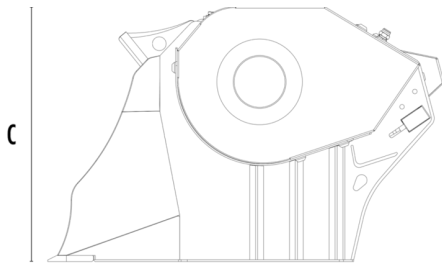


CRUSHER BUCKET MB-L160 S2



A






B

C



SPECIFICATIONS

	Recommended excavator	ton	11 - 16
	Recommended backhoe loader/loader*	ton	7 - 11
	Recommended skid steer loader*	ton	5 - 7
	Weight	ton	1,45
	Load capacity	m ³	0,35
	Pressure	bar	200 - 280
	Back pressure	bar	< 10
	Oil flow rate**	l/min	110 - 200
	Mouth width	mm	1180
	Mouth height	mm	280
	Size A	mm	1630
	Size B	mm	1300
	Size C	mm	835

* Please verify machine's Rated Operating Capacity

** The minimum hydraulic flow rate value must be alongside the required operating pressure

OPTIONAL ACCESSORIES

Dust suppression kit

Hour meter

24 Month warranty

APPLICATION AREAS



Demolitions



Road works



Recycling aggregates



Urban construction site