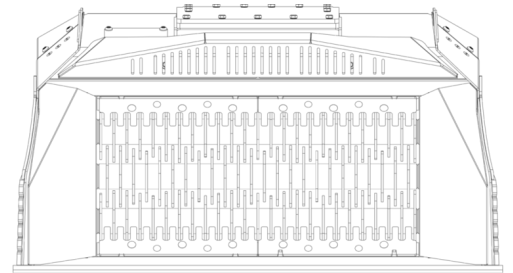
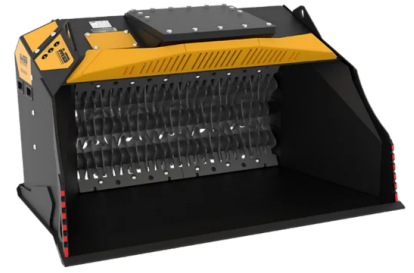
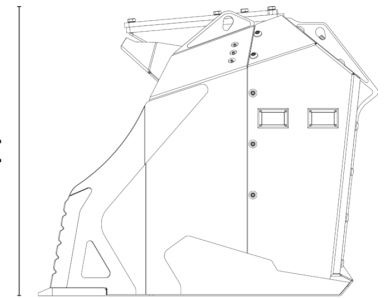


35 - 22	ton	Escavatore consigliato
16 - 12	ton	Terna/Pala consigliata
2,4	ton	Peso
1,65	m ³	Capacità di carico
300 - 250	bar	Pressione
160 - 120	l/min	Portata d'olio
2330	mm	Dimensione A
1500	mm	Dimensione B
1250	mm	Dimensione C

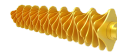


A



C

B



- mm 8
- mm 20
- mm 50
- mm 8.5
- mm 16
- mm 36.5

الملحقات الاختيارية



