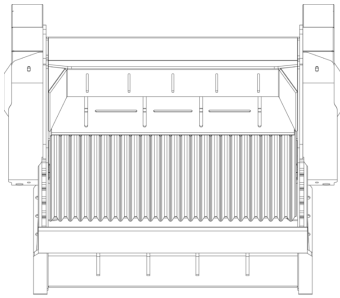
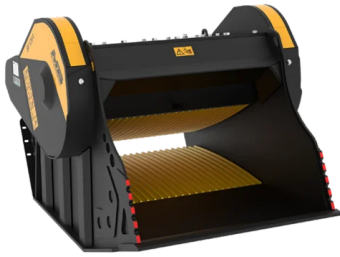
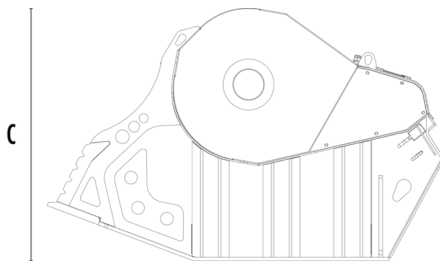


CRUSHER BUCKET BF120.4 S4



A



B



SPECIFICATIONS



Recommended excavator	lb	66,140 - 99,210
Weight	lb	10,582
Load capacity	cy	1.70
Pressure	PSI	3,191 - 4,061
Back pressure	PSI	< 145
Oil flow rate*	gal/min	50 - 66
Mouth width	in	47
Mouth height	in	21
Size A	in	64
Size B	in	86
Size C	in	55

* The minimum hydraulic flow rate value must be alongside the required operating pressure

OPTIONAL ACCESSORIES

Dust suppression kit	Hour meter
Iron separator 24 V	24 Month warranty

APPLICATION AREAS



Demolitions



Road works



Quarry



Mines



Tunnels



Enclosed spaces



Pipelines



Recycling aggregates



Urban construction site



Foundries



Forest Maintenance