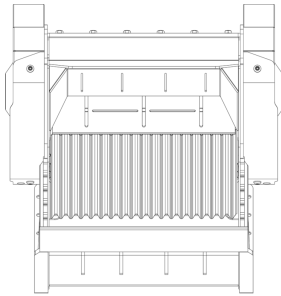
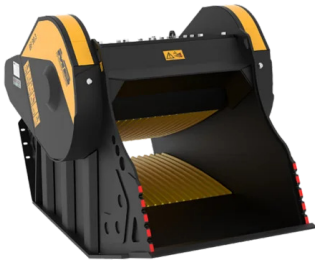
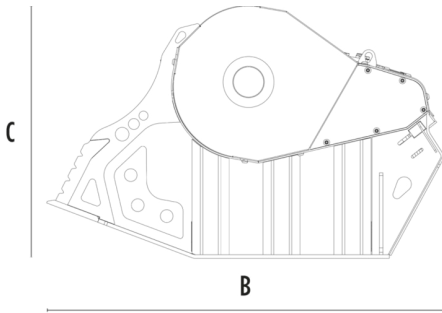


# CRUSHER BUCKET BF90.3 S4



A



B



## SPECIFICATIONS



Recommended excavator	lb	46,300 - 70,550
Weight	lb	7,716
Load capacity	cy	1.18
Pressure	PSI	3,191 - 4,061
Back pressure	PSI	< 145
Oil flow rate*	gal/min	48 - 58
Mouth width	in	36
Mouth height	in	21
Size A	in	53
Size B	in	86
Size C	in	55

\* The minimum hydraulic flow rate value must be alongside the required operating pressure

## OPTIONAL ACCESSORIES

Dust suppression kit	Hour meter
Iron separator 24 V	24 Month warranty

## APPLICATION AREAS



Demolitions



Road works



Quarry



Mines



Tunnels



Enclosed spaces



Pipelines



Recycling aggregates



Urban construction site



Foundries



Forest Maintenance