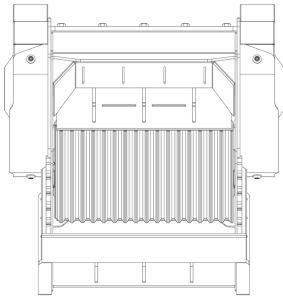
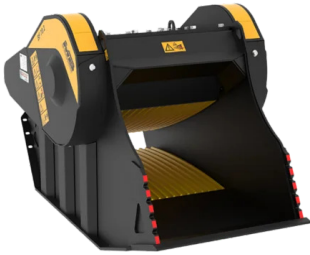
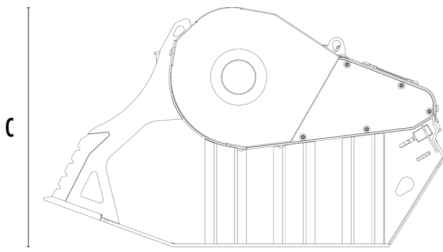


# CRUSHER BUCKET BF70.2 S4



A



B



## SPECIFICATIONS



Recommended excavator	lb	35,270 - 55,120
Weight	lb	5,071
Load capacity	cy	0.85
Pressure	PSI	3,191 - 4,061
Back pressure	PSI	< 145
Oil flow rate*	gal/min	40 - 58
Mouth width	in	29
Mouth height	in	20
Size A	in	45
Size B	in	79
Size C	in	47

\* The minimum hydraulic flow rate value must be alongside the required operating pressure

## OPTIONAL ACCESSORIES

Dust suppression kit	Hour meter
Iron separator 24 V	24 Month warranty

## APPLICATION AREAS

