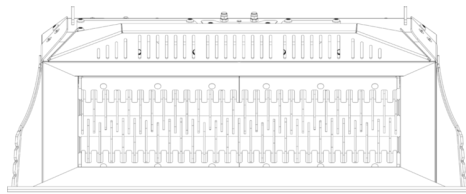
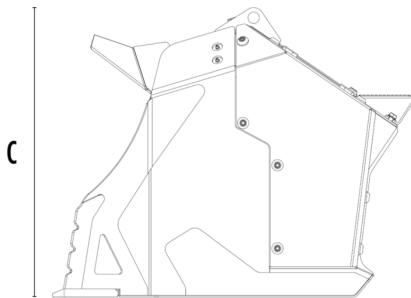


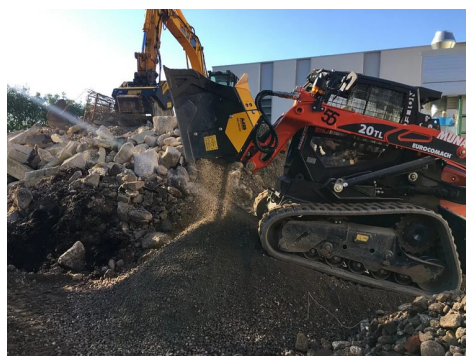
SHAFTS SCREENERS MB-HDS220



A



B



SPECIFICATIONS

| | | |
|------------------------------------|---------|-----------------|
| Recommended backhoe loader/loader* | lb | 15,430 - 24,250 |
| Recommended skid steer loader* | lb | 9,920 - 22,050 |
| Weight | lb | 2,205 |
| Load capacity | cy | 0.78 |
| Pressure | PSI | 3,336 - 4,061 |
| Oil flow rate** | gal/min | 24 - 70 |
| Size A | in | 87 |
| Size B | in | 42 |
| Size C | in | 35 |

* Please verify machine's Rated Operating Capacity

** The minimum hydraulic flow rate value must be alongside the required operating pressure

SHAFT KIT

| KIT | ADJUSTMENT* | APPLICATION |
|------------------|-------------|---|
| RQ8 Sifting kit | 0.30 in | Sifting damp/dry soil |
| RQ20 Sifting kit | 0.8 in | Soil Aeration |
| RM Mixer kit | | Soil Aeration Compost Aeration Charcoal reduction Glass reduction Drywall reduction |

* Shafts in closed position.

OPTIONAL ACCESSORIES

| | |
|-------------------|------------------|
| RQ8 Sifting kit | RQ20 Sifting kit |
| RM Mixer kit | Shaft holder |
| 24 Month warranty | |

APPLICATION AREAS



Road works



Excavations



Tunnels



Urban construction site



Enclosed spaces



Foundries



Pipelines



Maintaining landscape and agricultural areas



Recycling aggregates