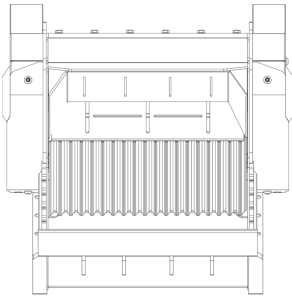
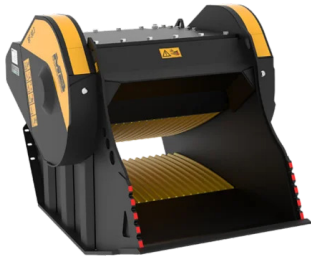
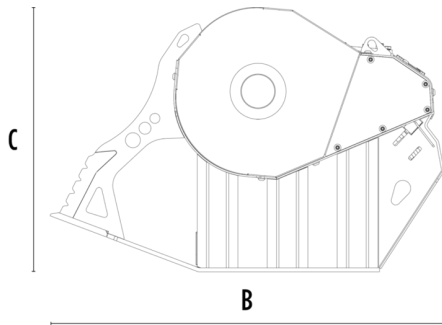


# CRUSHER BUCKET BF80.3 S4



A



B



## SPECIFICATIONS



Recommended excavator	lb	40,790 - 63,930
Weight	lb	6,614
Load capacity	cy	0.92
Pressure	PSI	3,191 - 4,061
Back pressure	PSI	< 145
Oil flow rate*	gal/min	40 - 58
Mouth width	in	35
Mouth height	in	20
Size A	in	52
Size B	in	76
Size C	in	52

\* The minimum hydraulic flow rate value must be alongside the required operating pressure

## OPTIONAL ACCESSORIES

Dust suppression kit	Hour meter
Iron separator 24 V	24 Month warranty

## APPLICATION AREAS



Demolitions



Road works



Quarry



Mines



Tunnels



Enclosed spaces



Pipelines



Recycling aggregates



Urban construction site



Foundries



Forest Maintenance