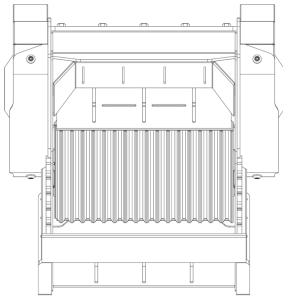
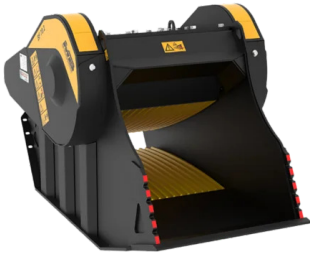
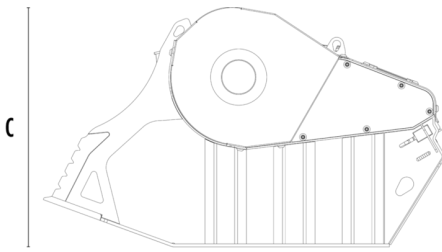


CRUSHER BUCKET BF70.2 S4



A



B



SPECIFICATIONS



Recommended excavator	lb	35,270 - 55,120
Weight	lb	5,071
Load capacity	cy	0.85
Pressure	PSI	3,191 - 4,061
Back pressure	PSI	< 145
Oil flow rate*	gal/min	40 - 58
Mouth width	in	29
Mouth height	in	20
Size A	in	45
Size B	in	79
Size C	in	47

* The minimum hydraulic flow rate value must be alongside the required operating pressure

OPTIONAL ACCESSORIES

Dust suppression kit	Hour meter
Iron separator 24 V	

APPLICATION AREAS



Demolitions



Road works



Tunnels



Enclosed spaces



Pipelines



Inert material recycling



Urban construction site



Foundries



Forest Maintenance