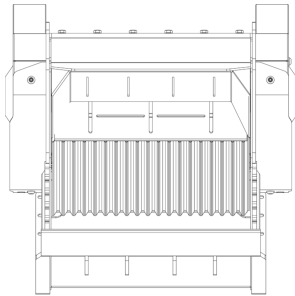
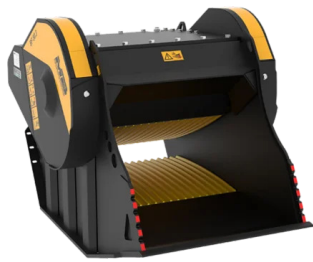
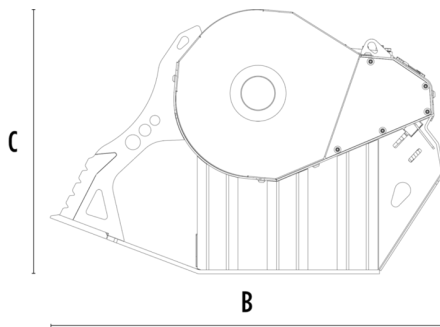


# CRUSHER BUCKET BF80.3 S4



A



B

C

## SPECIFICATIONS



Recommended excavator	ton	18,5 - 29
Weight	ton	3
Load capacity	m <sup>3</sup>	0,70
Pressure	bar	220 - 280
Back pressure	bar	< 10
Oil flow rate*	l/min	150 - 220
Mouth width	mm	880
Mouth height	mm	510
Size A	mm	1330
Size B	mm	1970
Size C	mm	1325

\* The minimum hydraulic flow rate value must be alongside the required operating pressure

## OPTIONAL ACCESSORIES

Dust suppression kit	Hour meter
Iron separator 24 V	24 Month warranty

## APPLICATION AREAS



Demolitions



Road works



Quarry



Mines



Tunnels



Enclosed spaces



Pipelines



Recycling aggregates



Urban construction site



Foundries



Forest Maintenance

