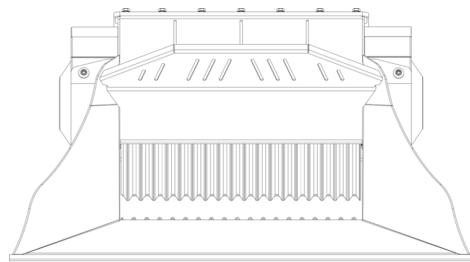
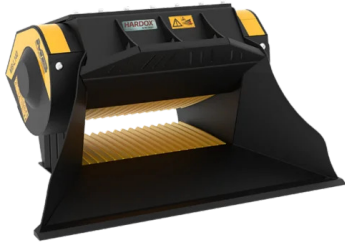
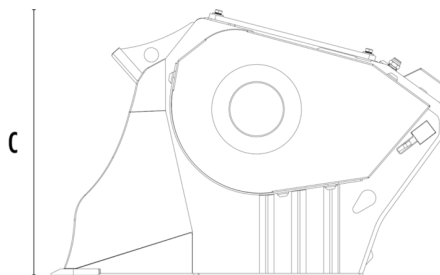


# CRUSHER BUCKET

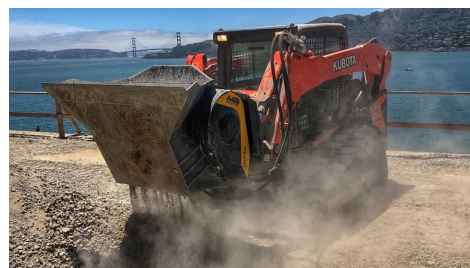
# MB-L140 S2






A



B



## SPECIFICATIONS

|   |                                    |         |                 |
|---|------------------------------------|---------|-----------------|
|  | Recommended excavator              | lb      | 16,540 - 28,660 |
|  | Recommended backhoe loader/loader* | lb      | 11,020 - 22,050 |
|  | Recommended skid steer loader*     | lb      | 6,610 - 13,230  |
|   | Weight                             | lb      | 2,161           |
|   | Load capacity                      | cy      | 0.26            |
|   | Pressure                           | PSI     | 2,901 - 3,626   |
|   | Back pressure                      | PSI     | < 145           |
|   | Oil flow rate**                    | gal/min | 26 - 40         |
|   | Mouth width                        | in      | 31              |
|   | Mouth height                       | in      | 10              |
|   | Size A                             | in      | 60              |
|   | Size B                             | in      | 48              |
|   | Size C                             | in      | 31              |

\* Please verify machine's Rated Operating Capacity

\*\* The minimum hydraulic flow rate value must be alongside the required operating pressure

## OPTIONAL ACCESSORIES

Dust suppression kit

Hour meter

## APPLICATION AREAS



Demolitions



Road works



Inert material  
recycling



Urban construction  
site