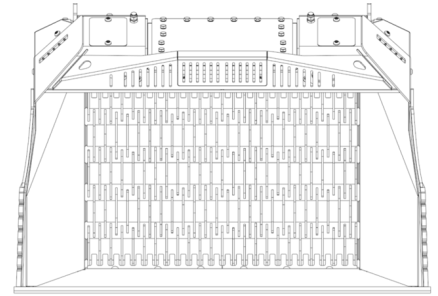
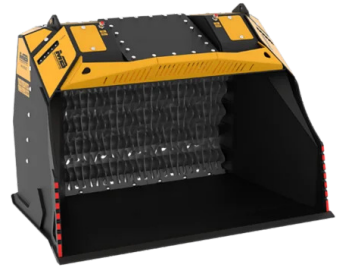
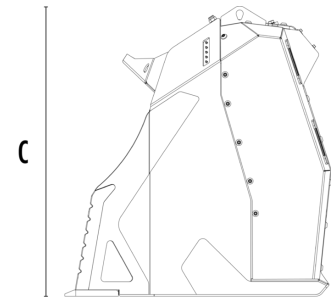


45 - 30	ton	Escavatore consigliato
3,35	ton	Peso
2,00	m <sup>3</sup>	Capacità di carico
300 - 250	bar	Pressione
250 - 230	l/min	Portata d'olio
2330	mm	Dimensione A
1500	mm	Dimensione B
1620	mm	Dimensione C



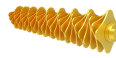
A



B

mm 8  
mm 20  
mm 50

mm 8.5  
mm 16  
mm 36.5



C

## الملحقات الاختيارية