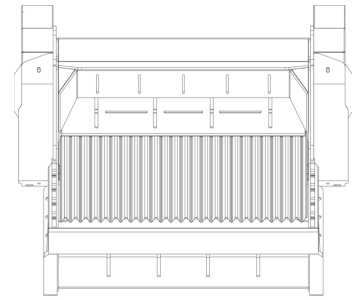
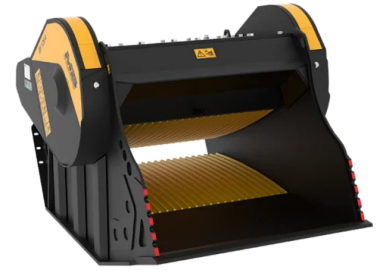
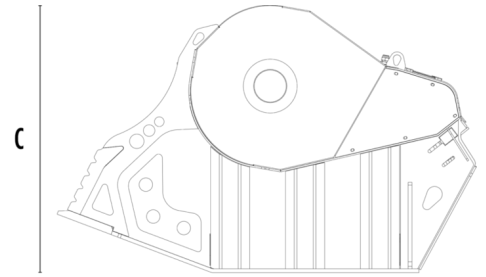


45 - 30	ton	Escavatore consigliato
4,8	ton	Peso
1,30	m ³	Capacità di carico
280 - 220	bar	Pressione
10 >	bar	Contropressione
250 - 190	l/min	Portata d'olio
1205	mm	Larghezza bocca
540	mm	Altezza bocca
1620	mm	Dimensione A
2185	mm	Dimensione B
1390	mm	Dimensione C



A



B

C

الملحقات الاختيارية

