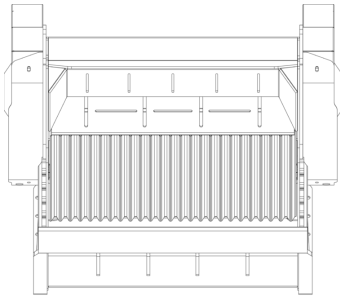
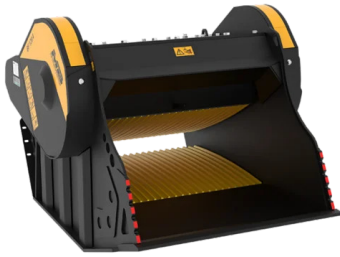
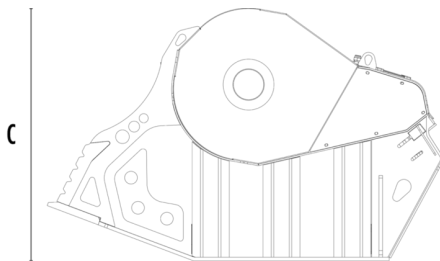


CRUSHER BUCKET BF120.4 S4



A



B



SPECIFICATIONS



Recommended excavator	ton	30 - 45
Weight	ton	4,8
Load capacity	m ³	1,30
Pressure	bar	220 - 280
Back pressure	bar	< 10
Oil flow rate*	l/min	190 - 250
Mouth width	mm	1205
Mouth height	mm	540
Size A	mm	1620
Size B	mm	2185
Size C	mm	1390

* The minimum hydraulic flow rate value must be alongside the required operating pressure

OPTIONAL ACCESSORIES

Dust suppression kit	Hour meter
Iron separator 24 V	24 Month warranty

APPLICATION AREAS



Demolitions



Road works



Quarry



Mines



Tunnels



Enclosed spaces



Pipelines



Recycling aggregates



Urban construction site



Foundries



Forest Maintenance